



uwe  damm®

your brand – your education – our traininghead



TRAININGHEADS
WITH QUALITY HAIR

uwe-damm.com



uwe-damm.com



@uwedamm.trainingheads



@uwedamm_trainingheads
#uwedamm_trainingheads

Prices apply from April 2024 and replace all older price information until revoked.



Inspired by nature

Uwe Damm stands for high-class, handmade trainingheads with Quality Hair. As an international company, we supply customers from all over the world with our products. For more than 15 years, leading beauty brands, wholesalers, state and private schools and seminar providers as well as hairdressers and stylists have trusted in our experience in the development and manufacturing of trainingheads.

The difference

Ethically manufactured in a SA8000® certified facility, hand implanted, natural hair fall, eyelashes, shoulders and sustainable packaging are just a few of the many benefits of an Uwe Damm traininghead. Our Indian Human Rawhair is gently processed to preserve the natural shine and elasticity of the hair. So every of our mannequin enables excellent results.

Ethic and sustainable

Sustainable thinking and working are an important part of our corporate philosophy. In addition to fair working conditions such as fair payment, social benefits and a safe working environment in our production facility, the Raw Hair is collected according to high ethical standards. The use of recyclable plastics and print products made from renewable paper and the Water treatment in production lead to another positive contribution to the environment.

Custom education

Together we can create something unique, perfectly tailored to your special needs. We design your wishes perfectly tailored to your needs for basic and master education or the perfect presentation of your brand.



FROM RAW HAIR TO A TRAININGHEAD

The temple hair

The journey of our trainingheads starts in Indian temples. There the owners donate their cherished and tended hair, mostly for religious reasons, voluntarily to the temple to thank their gods.

Selected hair trader

At official auctions the Raw Hair gets collected by approved hair traders. With the revenues, the preservation of the temples is secured as well as funded charitable projects such as schools, social institutions and hospitals. With prices of up to 800 dollars per kilo, raw hair is one of the most valuable and expensive raw materials.



Careful processing

After the Raw Hair arrives in our factory in China, the individual processing of the Hair begins. It is disinfected, washed with a sensitive shampoo, then brushed on a nail board and sorted in bundles according to color nuances and lengths. This is how we get our temple hair in Remi Quality, which is the prerequisite for a training head with Quality Hair.



Hair implantation

Afterwards the refined hair is implanted by hand in the still bald training head by our specially trained staff. This allows us to differentiate implanting -densities, -patterns and -directions as desired.



48 hours manual work

This is how our Uwe Damm Trainingheads are made by hand in up to 48 hours – with a natural fall and vortex, backing style, curls, with shoulders and eyelashes – like a real client.



In a special process – without destroying the cuticle layer – we slowly and gently dissolve the dark color pigments from our hair. In this way we preserve the natural shine and elasticity of the hair for our mannequin. After that the hair gets dyed to the desired target color, rinsed, receive their final treatment – without silicone – and gets air dried.

Quality control & packaging

After the manual make-up, the training-heads gets their personal name and go through the final quality control. For their travel around the world we pack them into reusable fabric bags made from recycled PET bottles and in protective cardboard boxes.



SA8000® – A BIG MILESTONE

Since June 2023, our trainingheads have been ethically manufactured in a production facility certified according to SA8000® standards. SA8000® is a certification system that supports manufacturing companies in adhering to social standards based on the international human rights convention and the recommendations of the International Labour Organization (ILO).

This globally recognized standard, structurally similar to management standards ISO

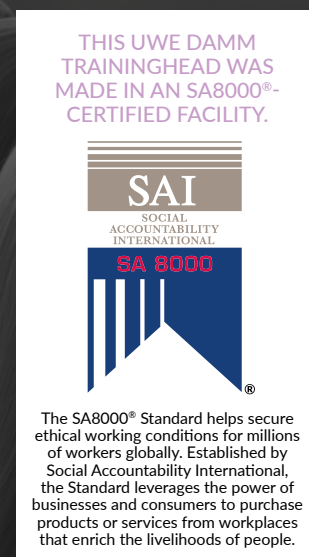
9001 and ISO 14001, includes a series of strict standards such as the establishment of dignified working conditions and the prohibition of child labor. Our company prioritizes the protection and adherence to social and labor standards and takes its social responsibility very seriously. Our employees receive fair wages and benefits. We ensure regulated working hours, holidays, and regular breaks. In addition to providing high-quality trainingheads, we offer ethically and sustainably manufactured products to our customers.

For this certification according to international standards, our production facility has undergone a complex process, rigorously examined to ensure compliance. Independent experts documented the facility's existing compliance and areas requiring improvement.

At the end of the certification process, all criteria were fully met. Semi-annual reviews further support us in continuously optimizing working conditions. Re-certification occurs every three years.

SA8000® CRITERIA

- NO child labor
- NO forced or compulsory labor
- NO disciplinary measures
- NO discrimination based on origin, gender, or religion
- Health protection and prohibition of compulsory work
- Freedom of assembly, organization of trade unions, collective wage negotiations
- Maximum working hours of 48 hours per week and at least 1 day off
- Guarantee of living wages



No child and forced labor



Prohibition of race, gender and religious discrimination



Documentation through certification to the outside



Right to freedom of association, union organization, and collective wage negotiations



Systematic improvement of conditions in the workplace



Setting the maximum working time at 48 hours per week, with one day off



Enforcement and implementation of dignified working conditions



Guarantee of living wages



HAIR LEXICON

We know that the success of our customers depends on the perfect hair. Therefor we process only the highest quality raw materials for our trainingheads. Regardless internationally uniform designations for hair types and hair qualities, there are crucial differences from supplier to supplier. With our hair dictionary we would like to offer you a general overview.



This is a synthetic fiber which is up to a certain point heat resistant. Visually, the fiber is clearly distinguishable from Human Hair. This hair type is also known as "eurotex" or as "biofiber". It is only conditionally suitable for cutting training and can't be permanently reshaped and colored.



This is a combination of synthetic and other types of hair. Refined horsehair can be used as well like Human Hair in all qualities. It is also up to a certain point heat resistant and can even be colored and reshaped to a limited extent, depending on the hair mixture. Mixhair is a cost-effective alternative for basic-cutting trainings.



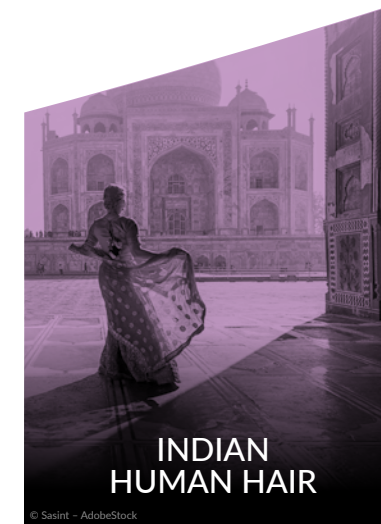
The term „Realhair“ is very common but says nothing about his indeed origin (human/animal), quality (Remy/non Remy, with/without cuticle) or ethics (dead/living human, forced/voluntary donor). It can be cut, colored, styled and shaped without problems.

We attach great importance on transparency and high quality in relation to our trainingheads. For our Realhair trainingheads Lisa, we use a mix of Human Hair and high-quality refined horse hair. With them cutting-, coloring- and updo-trainings without restrictions are possible.



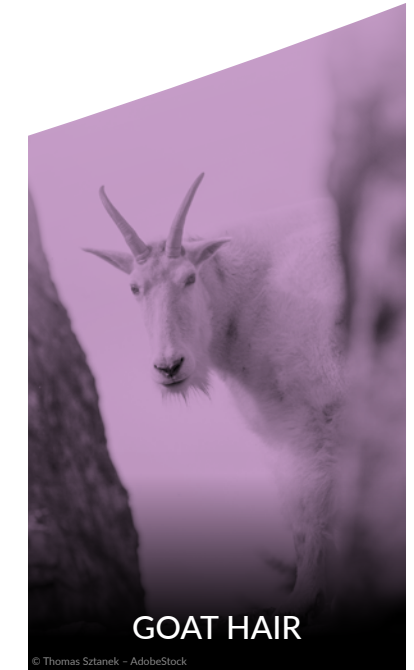
With its round diameter of about 0.12 to 0.20 mm Chinese Human Hair is 3 to 5 times thicker than European Human Hair. It is mostly available in natural tones of black to dark brown and almost without self-movement available. Many suppliers peel the cuticle with acid off to obtain a lighter and thinner hair. With this process the structure gets damaged as well as the cuticle is removed. It represents a cheap alternative, which is excellent suitable for a wide range of applications.

On our trainingheads with Chinese Human Hair, we do not peel off the cuticle. We light up our hair in a slow gentle process and then colorize them on the desired target color.



Indian Human Hair has a round to slightly oval diameter and is approximately 0.08 to 0.12 mm thick. Therefor it is almost twice as thick as European Human Hair but has a similar self-movement. It is mostly in natural tones from black to brown available. Through its similarity to the European Human Hair it is excellent suited for all applications.

For our trainingheads with Indian Human Hair, we only process high-quality temple Raw Hair. With that are best cutting-, coloring- and styling-results possible.



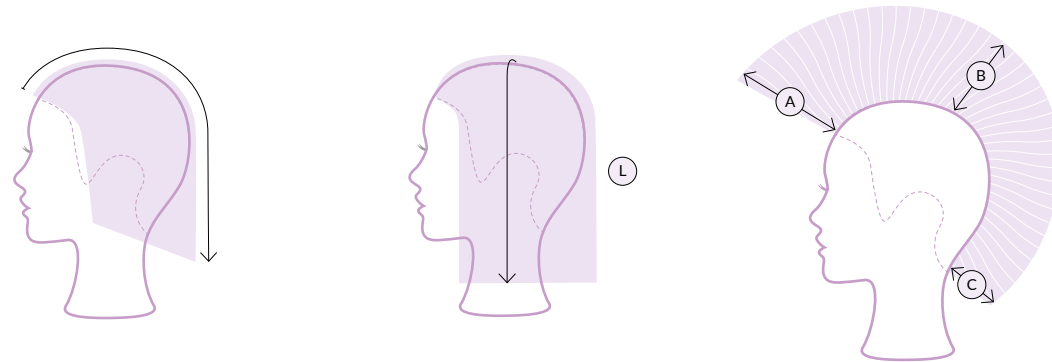
The hair of the Tibetan highland Goat is not called "white gold" for nothing. The hair grows to a maximum of 35 cm hair length. It has in contrast to the Human Hair no natural color pigments and is therefore naturally pure white. They are perfectly suitable for pastel and creative colorations because there is no more bleaching necessary.



More information at
uwe-damm.com

HAIR LENGTH MEASUREMENT METHODS

The hair length specification for trainingheads can be misleading, because different manufacturers use different measurement methods. Based on this graphics we would like to introduce you to the 3 most common methods worldwide.



With this measurement method, the hair length is measured from forehead over the highest point of the head to the hair ends in the nape.

With this measurement method, the hair length is measured from highest point of the head in the natural fall to the longest hair ends.

With this measurement method on predefined areas - mostly forehead, crown and nape - the hair are combed in 90° and the real hair length is stated.

How do we measure hair lengths at Uwe Damm Trainingheads?

Uwe Damm Trainingheads uses measurement methods 2 and 3 to indicate hair length. We put great importance to transparency, that's why we always use the respective measuring method, as well as the total length or the detail lengths.

The shown structure graphics illustrate the length arrangements at the various measuring points of the head.

STRUCTUR GRAPHICS

To find your perfect Uwe Damm training head or SlipOn, we have expanded our entire product range by including the following pictograms.

Category



Traininghead / SlipOn fullpart

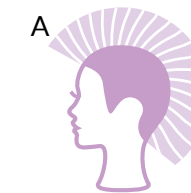


SlipOn verticalpart long

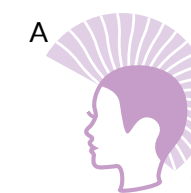


SlipOn verticalpart short

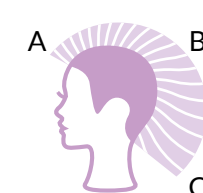
Hair length



uniform



solid



layered

Density



standard



increased




reduced

TRAININGHEADS

In order to offer you a wide range of different high-quality trainingheads, we process a wide variety of hair qualities. Such as Indian temple hair, high-quality horsehair or our white goat hair. We constantly try to adapt our product range according to the needs of our customers and develop also new products.

Discover our new Curly Series or become a fan of our new trainingheads with realistic head dimensions and increased density in a wide variety of hair lengths and colors.

For updo fans we have trainingheads with hair length up to 60 cm/24", with or without shoulders.

TRAININGHEADS WITH QUALITY HAIR BY **uwe  damm**



EVA

Nº	1122
HAIRLENGTH	~ 40 cm / 16"
	A: 40 cm / 16"
	B: 35 cm / 14"
	C: 35 cm / 14"
HAIRCOLOR	medium brown / 5
DENSITY	increased
H/CM²	230+ cm²
HAIRTYP	Indian Human Hair
GRAM OF HAIR	135 g
DIMENSION	~ 50,5 cm / 20 inch
DETAILS	natural fall
€*	67,92



ELVIRA

Nº	1136
HAIRLENGTH	~ 40 cm / 16"
	A: 40 cm / 16"
	B: 35 cm / 14"
	C: 35 cm / 14"
HAIRCOLOR	dark brown / 2
DENSITY	increased
H/CM²	230+ cm²
HAIRTYP	Indian Human Hair
GRAM OF HAIR	135 g
DIMENSION	~ 50,5 cm / 20 inch
DETAILS	natural fall
€*	67,92



ELKE

Nº	1151
HAIRLENGTH	~ 40 cm / 16"
	A: 40 cm / 16"
	B: 35 cm / 14"
	C: 35 cm / 14"
HAIRCOLOR	dark blond / 7
DENSITY	increased
H/CM²	230+ cm²
HAIRTYP	Indian Human Hair
GRAM OF HAIR	135 g
DIMENSION	~ 50,5 cm / 20 inch
DETAILS	natural fall
€*	68,10



ELISA

Nº	1132
HAIRLENGTH	~ 40 cm / 16"
HAIRCOLOR	gold blond / 9
DENSITY	increased
H/CM²	230+ cm²
HAIRTYP	Chinese Human Hair
GRAM OF HAIR	135 g
DIMENSION	~ 50,5 cm / 20 inch
DETAILS	natural fall
€*	73,21



MIRA

Nº	1144
HAIRLENGTH	~ 40 cm / 16"
HAIRCOLOR	light blond / 11
DENSITY	standard
H/CM²	200 - 230 cm²
HAIRTYP	Indian Human Hair
GRAM OF HAIR	105 g
DIMENSION	~ 50,5 cm / 20 inch
DETAILS	natural fall
€*	71,52



MARA

Nº	1147
HAIRLENGTH	~ 40 cm / 16"
HAIRCOLOR	dark blond / 7
DENSITY	standard
H/CM²	200 - 230 cm²
HAIRTYP	Indian Human Hair
GRAM OF HAIR	105 g
DIMENSION	~ 50,5 cm / 20 inch
DETAILS	natural fall
€*	58,48



BELLA

Nº | 1142
HAIRLENGTH | ~ 35 cm / 14"
HAIRCOLOR | medium brown / 5
DENSITY | standard
H/CM² | 200 – 230 cm²
HAIRTYP | Indian
Human Hair
GRAM OF HAIR | 105 g
DIMENSION | ~ 50,5 cm / 20 inch
DETAILS | natural fall
€* | 49,93



BIRGIT

Nº | 1141
HAIRLENGTH | ~ 35 cm / 14"
HAIRCOLOR | dark blond / 7
DENSITY | standard
H/CM² | 200 – 230 cm²
HAIRTYP | Indian
Human Hair
GRAM OF HAIR | 105 g
DIMENSION | ~ 50,5 cm / 20 inch
DETAILS | natural fall
€* | 49,93



NEW

BIANCA

Nº | 1143
HAIRLENGTH | ~ 30 cm / 12"
HAIRCOLOR | medium brown / 5
DENSITY | reduced
H/CM² | 150 – 200 cm²
HAIRTYP | Indian
Human Hair
GRAM OF HAIR | 95 g
DIMENSION | ~ 50,5 cm / 20 inch
DETAILS | natural fall
€* | 43,96



MILA

Nº | 1146
HAIRLENGTH | ~ 35 cm / 14"
HAIRCOLOR | light blond / 11
DENSITY | standard
H/CM² | 200 – 230 cm²
HAIRTYP | Indian
Human Hair
GRAM OF HAIR | 105 g
DIMENSION | ~ 50,5 cm / 20 inch
DETAILS | natural fall
€* | 66,07



CHIARA

Nº | 1350G
HAIRLENGTH | ~ 35 cm / 14"
HAIRCOLOR | grey
DENSITY | standard
H/CM² | 200 – 230 cm²
HAIRTYP | Indian
Human Hair
GRAM OF HAIR | 105 g
DIMENSION | ~ 50,5 cm / 20 inch
DETAILS | natural fall
€* | 56,47



NICOLE

Nº | 1160
HAIRLENGTH | ~ 25 cm / 10"
ABC: 25 cm / 10"
HAIRCOLOR | medium brown / 5
DENSITY | reduced
H/CM² | 150 – 200 cm²
HAIRTYP | Chinese
Human Hair
GRAM OF HAIR | 90 g
DIMENSION | ~ 50,5 cm / 20 inch
DETAILS | natural fall
€* | 39,03





MARTINA

Nº	1161
HAIRLENGTH	~ 25 cm / 10"
HAIRCOLOR	ABC: 25 cm / 10"
DENSITY	reduced
H/CM²	150 – 200 cm²
HAIRTYP	Indian Human Hair
GRAM OF HAIR	90 g
DIMENSION	~ 50,5 cm / 20 inch
DETAILS	natural fall
€*	47,79



MIA

Nº	1165G
HAIRLENGTH	~ 35 cm / 14"
HAIRCOLOR	white
DENSITY	standard
H/CM²	200 – 230 cm²
HAIRTYP	Goat Hair
GRAM OF HAIR	115 g
DIMENSION	~ 50,5 cm / 20 inch
DETAILS	natural fall
€*	67,93



LANA

Nº	1310
HAIRLENGTH	~ 40 cm / 16"
HAIRCOLOR	medium brown / 5
DENSITY	reduced
H/CM²	150 – 200 cm²
HAIRTYP	Indian Human Hair
GRAM OF HAIR	90 g
DIMENSION	~ 50,5 cm / 20 inch
DETAILS	natural fall
€*	51,08



LARISSA

Nº	1312
HAIRLENGTH	~ 35 cm / 14"
HAIRCOLOR	medium brown / 5
DENSITY	reduced
H/CM²	150 – 200 cm²
HAIRTYP	Indian Human Hair
GRAM OF HAIR	90 g
DIMENSION	~ 50,5 cm / 20 inch
DETAILS	natural fall
€*	48,54



LUNA

Nº	1311
HAIRLENGTH	~ 35 cm / 14"
HAIRCOLOR	gold blond / 9
DENSITY	reduced
H/CM²	150 – 200 cm²
HAIRTYP	Indian Human Hair
GRAM OF HAIR	90 g
DIMENSION	~ 50,5 cm / 20 inch
DETAILS	natural fall
€*	59,81





AMELIE

N°	1200
HAIRLENGTH	~ 60 cm / 24"
HAIRCOLOR	dark blond / 7
DENSITY	standard
H/CM²	200 - 230 cm²
HAIRTYP	Indian Human Hair
GRAM OF HAIR	150 g
DIMENSION	~ 50,5 cm / 20 inch
DETAILS	backing style
€*	108,73



ANNA

N°	1201
HAIRLENGTH	~ 60 cm / 24"
HAIRCOLOR	gold blond / 9
DENSITY	standard
H/CM²	200 - 230 cm²
HAIRTYP	Indian Human Hair
GRAM OF HAIR	150 g
DIMENSION	~ 50,5 cm / 20 inch
DETAILS	backing style
€*	131,47



ALESSIA

N°	1205
HAIRLENGTH	~ 60 cm / 24"
HAIRCOLOR	medium brown / 5
DENSITY	standard
H/CM²	200 - 230 cm²
HAIRTYP	Indian Human Hair
GRAM OF HAIR	150 g
DIMENSION	~ 50,5 cm / 20 inch
DETAILS	backing style
€*	99,32





ALICE

Nº	1202
HAIRLENGTH	~ 60 cm / 24"
HAIRCOLOR	light blond / 11
DENSITY	standard
H/CM²	200 – 230 cm²
HAIRTYP	Indian
	Human Hair
GRAM OF HAIR	150 g
DIMENSION	~ 50,5 cm / 20 inch
DETAILS	backing style
€*	151,48



ELLEN

Nº	1190
HAIRLENGTH	~ 50 cm / 20"
HAIRCOLOR	medium brown / 5
DENSITY	standard
H/CM²	200 – 230 cm²
HAIRTYP	Indian
	Human Hair
GRAM OF HAIR	150 g
DIMENSION	~ 50,5 cm / 20 inch
DETAILS	natural fall
€*	94,14



ANGELIKA

Nº	1145
HAIRLENGTH	~ 50 cm / 20"
HAIRCOLOR	dark blond / 7
DENSITY	increased
H/CM²	230+ cm²
HAIRTYP	Indian
	Human Hair
GRAM OF HAIR	185 g
DIMENSION	~ 50,5 cm / 20 inch
DETAILS	natural fall
€*	126,89



HEIDI 5-PART

Nº	1140
HAIRLENGTH	~ 25 cm / 10"
	ABC: 25 cm / 10"
HAIRCOLOR	medium brown / 5
	dark blond / 7
	light blond / 11
	light grey / dark grey
DENSITY	standard
H/CM²	200 – 230 cm²
HAIRTYP	Indian
	Human Hair
GRAM OF HAIR	125 g
DIMENSION	~ 50,5 cm / 20 inch
DETAILS	5-PART
€*	57,90



ELSA

Nº	1191
HAIRLENGTH	~ 50 cm / 20"
HAIRCOLOR	gold blond / 9
DENSITY	standard
H/CM²	200 – 230 cm²
HAIRTYP	Indian
	Human Hair
GRAM OF HAIR	150 g
DIMENSION	~ 50,5 cm / 20 inch
DETAILS	natural fall
€*	124,62



OUR NEW TRAININGHEADS ARE HERE!

We are happy to introduce you our new Uwe Damm traininghead series. Ethically handmade, with a realistic head dimension of 53 cm, a beautiful new face and eyelashes, our new trainingheads are a real eyecatcher.

This completely new developed series offers something for everyone, from short hair to 45 cm long Indian human hair, from brown to light blond. We have also followed your often expressed wish for backing style on trainingheads. With her increased hair weight and her new hairlength this Uwe Damm Trainingheads represent another important step ahead in our product development.

With a total of over 70 different models Uwe Damm Trainingheads offers you one of the largest Assortments of practice heads for its worldwide customers.

ESTELLE

Nº	1605
HAIRLENGTH	~ 25 cm / 10"
	ABC: 25 cm / 10"
HAIRCOLOR	medium brown / 5
DENSITY	increased
H/CM²	230+ cm²
HAIRTYP	Indian Human Hair
GRAM OF HAIR	135 g
DIMENSION	~ 53 cm/20.9 inch
DETAILS	backing style
€*	55,37



GINA

Nº	1620
HAIRLENGTH	~ 35 cm / 14"
	ABC: 35 cm / 14"
HAIRCOLOR	medium brown / 5
DENSITY	increased
H/CM²	230+ cm²
HAIRTYP	Indian Human Hair
GRAM OF HAIR	140 g
DIMENSION	~ 53 cm/20.9 inch
DETAILS	natural fall
€*	70,91



NATALIE

Nº	1610
HAIRLENGTH	~ 30 cm / 12"
	ABC: 30 cm / 12"
HAIRCOLOR	medium brown / 5
DENSITY	increased
H/CM²	230+ cm²
HAIRTYP	Indian Human Hair
GRAM OF HAIR	135 g
DIMENSION	~ 53 cm/20.9 inch
DETAILS	backing style
€*	63,64



GRACE

Nº	1621
HAIRLENGTH	~ 35 cm / 14"
	ABC: 35 cm / 14"
HAIRCOLOR	medium brown / 5
DENSITY	increased
H/CM²	230+ cm²
HAIRTYP	Indian Human Hair
GRAM OF HAIR	140 g
DIMENSION	~ 53 cm / 20.9 inch
DETAILS	backing style
€*	70,91





GIULIA

Nº	1623
HAIRLENGTH	~ 35 cm / 14"
	ABC: 35 cm / 14"
HAIRCOLOR	light blond / 11
DENSITY	erhöht
H/CM²	230+ cm²
HAIRTYP	Indian Human Hair
GRAM OF HAIR	140 g
DIMENSION	~ 53 cm / 20.9 inch
DETAILS	backing style
€*	89,91



NEW



GIADA

Nº	1622
HAIRLENGTH	~ 35 cm / 14"
	ABC: 35 cm / 14"
HAIRCOLOR	gold blond / 9
DENSITY	increased
H/CM²	230+ cm²
HAIRTYP	Indian Human Hair
GRAM OF HAIR	140 g
DIMENSION	~ 53 cm / 20.9 inch
DETAILS	backing style
€*	85,92



NEW



CLARISSA

Nº	1635
HAIRLENGTH	~ 45 cm / 18"
	ABC: 45 cm / 18"
HAIRCOLOR	medium brown / 5
DENSITY	increased
H/CM²	230+ cm²
HAIRTYP	Indian Human Hair
GRAM OF HAIR	160 g
DIMENSION	~ 53 cm / 20.9 inch
DETAILS	natural fall
€*	85,35



NEW



CARLA

Nº	1636
HAIRLENGTH	~ 45 cm / 18"
	A: 45 cm/18"
	B: 40 cm/16"
	C: 35 cm/14"
HAIRCOLOR	gold blond / 9
DENSITY	increased
H/CM²	230+ cm²
HAIRTYP	Indian Human Hair
GRAM OF HAIR	155 g
DIMENSION	~ 53 cm / 20.9 inch
DETAILS	backing style
€*	110,85



NEW

COMING
soon

NELE

Nº	1600
HAIRLENGTH	~ 20 cm / 8"
	ABC: 20 cm / 8"
HAIRCOLOR	dark brown / 2
DENSITY	increased
H/CM²	230+ cm²
HAIRTYP	Indian Human Hair
GRAM OF HAIR	130 g
DIMENSION	~ 53 cm / 20.9 inch
DETAILS	backing style
€*	48,94



FRANCESCA

Nº	1631
HAIRLENGTH	~ 40 cm / 16"
	A: 40 cm / 16"
	B: 35 cm / 14"
	C: 35 cm / 14"
HAIRCOLOR	gold blond / 9
DENSITY	increased
H/CM²	230+ cm²
HAIRTYP	Indian Human Hair
GRAM OF HAIR	150 g
DIMENSION	~ 53 cm / 20.9 inch
DETAILS	natural fall
€*	87,29



EMILIE

Nº	1606
HAIRLENGTH	~ 25 cm / 10"
	ABC: 25 cm / 10"
HAIRCOLOR	gold blond / 9
DENSITY	increased
H/CM²	230+ cm²
HAIRTYP	Indian Human Hair
GRAM OF HAIR	135 g
DIMENSION	~ 53 cm / 20.9 inch
DETAILS	backing style
€*	58,09



FRANCA

Nº	1630
HAIRLENGTH	~ 40 cm / 16"
	A: 40 cm / 16"
	B: 35 cm / 14"
	C: 35 cm / 14"
HAIRCOLOR	medium brown / 5
DENSITY	increased
H/CM²	230+ cm²
HAIRTYP	Indian Human Hair
GRAM OF HAIR	150 g
DIMENSION	~ 53 cm / 20.9 inch
DETAILS	natural fall
€*	74,83



COMING
soon



AMBER

Nº	1360
HAIRLENGTH	~ 20 cm / 8"
	ABC: 20 cm / 8"
HAIRCOLOR	black / 1
DENSITY	standard
H/CM²	200 - 230 cm²
HAIRTYP	afro
GRAM OF HAIR	105 g
DIMENSION	~ 50,5 cm / 20 inch
DETAILS	afro, dark skin
€*	59,94



CURLY medium

Nº	1362
HAIRLENGTH	~ 35 cm / 14"
	ABC: 35 cm / 14"
	before curl
HAIRCOLOR	medium brown / 5
DENSITY	standard
H/CM²	200 - 230 cm²
HAIRTYP	Indian Human Hair
GRAM OF HAIR	105 g
DIMENSION	~ 50,5 cm / 20 inch
DETAILS	curls: Ø 6 mm
€*	58,23



CURLY longhair

Nº	1365
HAIRLENGTH	~ 60 cm / 24"
	before curl
HAIRCOLOR	dark blond / 7
DENSITY	standard
H/CM²	200 - 230 cm²
HAIRTYP	Indian Human Hair
GRAM OF HAIR	150 g
DIMENSION	~ 50,5 cm / 20 inch
DETAILS	curls: Ø 14 mm
€*	112,00



CURLY small

Nº	1361
HAIRLENGTH	~ 35 cm / 14"
	ABC: 35 cm / 14"
	before curl
HAIRCOLOR	medium brown / 5
DENSITY	standard
H/CM²	200 - 230 cm²
HAIRTYP	Indian Human Hair
GRAM OF HAIR	105 g
DIMENSION	~ 50,5 cm / 20 inch
DETAILS	curls: Ø 2,5 mm
€*	56,27



CURLY large

Nº	1363
HAIRLENGTH	~ 40 cm / 16"
	before curl
HAIRCOLOR	medium brown / 5
DENSITY	increased
H/CM²	230+ - 230 cm²
HAIRTYP	Indian Human Hair
GRAM OF HAIR	135 g
DIMENSION	~ 50,5 cm / 20 inch
DETAILS	curls: Ø 10 mm
€*	73,81





ANDREA

Nº	1127E
HAIRLENGTH	~ 50 cm / 20"
HAIRCOLOR	medium brown / 5
DENSITY	standard
H/CM²	200 – 230 cm²
HAIRTYP	Realhair
GRAM OF HAIR	150 g
DIMENSION	~ 50,5 cm / 20.0 inch
DETAILS	natural fall
€*	84,54



LISA

Nº	1121E
HAIRLENGTH	~ 40 cm / 16" A: 40 cm / 16" B: 35 cm / 14" C: 35 cm / 14"
HAIRCOLOR	medium brown / 5
DENSITY	standard
H/CM²	200 – 230 cm²
HAIRTYP	Realhair
GRAM OF HAIR	130 g
DIMENSION	~ 50,5 cm / 20 inch
DETAILS	natural fall
€*	58,35



ALINA

Nº	1126E
HAIRLENGTH	~ 50 cm / 20"
HAIRCOLOR	light blond / 11
DENSITY	standard
H/CM²	200 – 230 cm²
HAIRTYP	Realhair
GRAM OF HAIR	150 g
DIMENSION	~ 50,5 cm / 20 inch
DETAILS	natural fall
€*	99,32



TUULA

Nº	1118S
HAIRLENGTH	~ 60 cm / 24"
HAIRCOLOR	black / 1
DENSITY	increased
H/CM²	230+ cm²
HAIRTYP	Synthetic Hair
GRAM OF HAIR	220 g
DIMENSION	~ 50,5 cm / 20 inch
DETAILS	backing style
€*	36,31



TARA

Nº	1119M
HAIRLENGTH	~ 60 cm / 24"
HAIRCOLOR	medium brown / 5
DENSITY	increased
H/CM²	230+ cm²
HAIRTYP	Mixhair
GRAM OF HAIR	150 g
DIMENSION	~ 50,5 cm / 20 inch
DETAILS	backing style
€*	47,39



Max. heat resistant up to 120°C.



TINA

Nº	1120M
HAIRLENGTH	~ 40 cm / 16"
HAIRCOLOR	medium brown / 5
DENSITY	standard
H/CM²	200 – 230 cm²
HAIRTYP	Mixhair
GRAM OF HAIR	125 g
DIMENSION	~ 50,5 cm / 20 inch
DETAILS	natural fall
€*	44,69





DANIEL

Nº	1123
HAIRLENGTH	~ 20 cm / 8"
	ABC: 20 cm / 8"
HAIRCOLOR	medium brown / 5
DENSITY	standard
H/CM²	200 - 230 cm²
HAIRTYP	Chinese Human Hair
GRAM OF HAIR	105 g
DIMENSION	~ 52 cm / 20.5 inch
DETAILS	natural fall
€*	49,39



DANIEL with beard	
Nº	1124
HAIRLENGTH	~ 20 cm / 8"
	ABC: 20 cm / 8"
	D: ~ 15 cm/6"
HAIRCOLOR	medium brown / 5
DENSITY	standard
H/CM²	200 - 230 cm²
HAIRTYP	Chinese Human Hair
GRAM OF HAIR	130 g
DIMENSION	~ 52 cm / 20.5 inch
DETAILS	natural fall, beard
€*	53,22



DANIEL grey

Nº	1320
HAIRLENGTH	~ 20 cm / 8"
	ABC: 20 cm / 8"
HAIRCOLOR	grey
DENSITY	standard
H/CM²	200 - 230 cm²
HAIRTYP	Chinese Human Hair
GRAM OF HAIR	105 g
DIMENSION	~ 52 cm / 20.5 inch
DETAILS	natural fall
€*	54,50



DANIEL
with beard white

Nº	1321G
HAIRLENGTH	~ 20 cm / 8"
	ABC: 20 cm / 8"
	D: ~15 cm / 6"
HAIRCOLOR	white
DENSITY	standard
H/CM²	200 – 230 cm²
HAIRTYP	Goat Hair
GRAM OF HAIR	130 g
DIMENSION	~ 52 cm / 20.5 inch
DETAILS	natural fall, beard
€*	52,53



PAUL
with beard

Nº	1326
HAIRLENGTH	~ 20 cm / 8"
	ABC: 20 cm / 8"
	D: ~15 cm / 6"
HAIRCOLOR	medium brown / 5
DENSITY	increased
H/CM²	230+ – 260 cm²
HAIRTYP	Indian Human Hair
GRAM OF HAIR	165 g
DIMENSION	~ 54 cm / 21.2 inch
DETAILS	natural fall, beard, extended hairline
€*	61,72



PAUL

Nº	1325
HAIRLENGTH	~ 20 cm / 8"
	ABC: 20 cm / 8"
HAIRCOLOR	medium brown / 5
DENSITY	increased
H/CM²	230+ cm²
HAIRTYP	Indian Human Hair
GRAM OF HAIR	130 g
DIMENSION	~ 54 cm / 21.2 inch
DETAILS	natural fall, extended hairline
€*	58,09






SHOULDERHEADS

We offer our Uwe Damm shoulderheads in a wide variety of hair colors and hair lengths, with eye-lashes and earholes.

With 150 to 180g of indian human hair, these mannequins are perfect for examinations, competition and updo courses.

Our exclusive colorful Tanja series inspires updo artists worldwide with their brilliant hair colors.

We have also revised our shoulder models and given them an upgrade of up to 30% more grams and up to 10 cm longer indian human hairs.

TRAININGHEADS WITH QUALITY HAIR BY **uwe**  **damm**

TAMARA

Nº	1210
HAIRLENGTH	~ 60 cm / 24"
HAIRCOLOR	dark blond / 7
DENSITY	standard
H/CM²	200 – 230 cm²
HAIRTYP	Indian Human Hair
GRAM OF HAIR	150 g
DIMENSION	~ 55 cm / 21.6 inch
DETAILS	backing style, lashes
€*	129,54



TESSA

Nº	1212
HAIRLENGTH	~ 60 cm / 24"
HAIRCOLOR	gold blond / 9
DENSITY	standard
H/CM²	200 – 230 cm²
HAIRTYP	Indian Human Hair
GRAM OF HAIR	150 g
DIMENSION	~ 55 cm / 21.6 inch
DETAILS	backing style, lashes
€*	153,80



TANJA

Nº	1214
HAIRLENGTH	~ 60 cm / 24"
HAIRCOLOR	light blond / 11
DENSITY	standard
H/CM²	200 – 230 cm²
HAIRTYP	Indian Human Hair
GRAM OF HAIR	150 g
DIMENSION	~ 55 cm / 21.6 inch
DETAILS	backing style, lashes
€*	164,35



COLORFUL TANJA

Nº	1400
HAIRLENGTH	~ 60 cm / 24"
HAIRCOLOR	red / blue / green / yellow / violett / plum / turquoise
DENSITY	increased
H/CM²	230+ cm²
HAIRTYP	Indian Human Hair
GRAM OF HAIR	150 – 170 g
DIMENSION	~ 55 cm / 21.6 inch
DETAILS	in 7 colors available, backing style, lashes
€*	189,33



BEA

Nº	1220
HAIRLENGTH	~ 40 cm / 16" A: 40 cm / 16" B: 35 cm / 14" C: 35 cm / 14"
HAIRCOLOR	dark blond / 7
DENSITY	increased
H/CM²	230+ cm²
HAIRTYP	Indian Human Hair
GRAM OF HAIR	135 g
DIMENSION	~ 55 cm / 21.6 inch
DETAILS	natural fall, lashes
€*	79,26



BETTINA

Nº	1222
HAIRLENGTH	~ 40 cm / 16"
	A: 40 cm / 16"
	B: 35 cm / 14"
	C: 35 cm / 14"
HAIRCOLOR	gold blond / 9
DENSITY	standard
H/CM²	200 – 230 cm²
HAIRTYP	Indian Human Hair
GRAM OF HAIR	135 g
DIMENSION	~ 55 cm / 21.6 inch
DETAILS	natural fall, lashes
€*	90,38



BABETTE

Nº	1227
HAIRLENGTH	~ 30 cm / 12"
HAIRCOLOR	light blond / 11
DENSITY	reduced
H/CM²	200 – 230 cm²
HAIRTYP	Indian Human Hair
GRAM OF HAIR	150 – 170 cm²
DIMENSION	~ 55 cm / 21.6 inch
DETAILS	natural fall, lashes
€*	66,95



BARBARA

Nº	1225
HAIRLENGTH	~ 30 cm / 12"
	ABC: 30 cm / 12"
HAIRCOLOR	dark blond / 7
DENSITY	standard
H/CM²	200 – 230 cm²
HAIRTYP	Indian Human Hair
GRAM OF HAIR	120 g
DIMENSION	~ 55 cm / 21.6 inch
DETAILS	natural fall, lashes
€*	69,94



VANESSA

Nº	1226
HAIRLENGTH	~ 35 cm / 14"
	ABC: 35 cm / 14"
HAIRCOLOR	medium brown / 5
DENSITY	increased
H/CM²	230+ cm²
HAIRTYP	Indian Human Hair
GRAM OF HAIR	140 g
DIMENSION	~ 55 cm / 21.6 inch
DETAILS	backing style, lashes
€*	79,31



TATJANA

Nº	1215
HAIRLENGTH	~ 55 cm / 22"
HAIRCOLOR	gold blond / 9
DENSITY	increased
H/CM²	230+ cm²
HAIRTYP	Indian Human Hair
GRAM OF HAIR	180 g
DIMENSION	~ 55 cm / 21.6 inch
DETAILS	backing style, lashes
€*	193,77



TERI

Nº	1216G
HAIRLENGTH	~ 40 cm / 16"
HAIRCOLOR	white
DENSITY	standard
H/CM²	200 – 230 cm²
HAIRTYP	Goat Hair
GRAM OF HAIR	130 g
DIMENSION	~ 55 cm / 21.6 inch
DETAILS	natural fall, lashes
€*	71,33





1

TRAINING
HEAD

∞

ENDLESS
POSSIBILITIES

SlipOn



The innovative system by Uwe Damm Trainingheads offers with its reusable base head and interchangeable SlipOn's a sustainable alternative for your education. Design your training independently and customized with a quick SlipOn and Off in different colors, shapes and lengths.


environmentally
friendly & recyclable


CO₂ reducing
transport


cheaper
& consistent

TRAININGHEADS WITH QUALITY HAIR BY  **uwe damm**

BASIC HEAD

Nº	SO100
FARBE	skin colored
DIMENSION	~ 53 cm / 20.8 inch
DETAILS	Basic Head for Uwe Damm SlipOn System
€*	19,78



NEW



NEW



NEW



NEW



NEW



NEW

ELLEN
fullpart longhair

Nº	SO125
HAIRLENGTH	~ 50 cm / 20"
HAIRCOLOR	dark blond / 7
DENSITY	standard
H/CM²	200 – 230 cm²
HAIRTYP	Indian Human Hair
GRAM OF HAIR	150 g
DIMENSION	~ 53 cm / 20.8 inch
DETAILS	natural fall
€*	87,81



FULLPART
uniform light blond

Nº	SO123
HAIRLENGTH	~ 25 cm / 10" ABC: 25 cm / 10"
HAIRCOLOR	light blond / 11
DENSITY	standard
H/CM²	200 – 230 cm²
HAIRTYP	Indian Human Hair
GRAM OF HAIR	125 g
DIMENSION	~ 53 cm / 20.8 inch
DETAILS	natural fall
€*	58,29



HEIDI
5-part fullpart

Nº	SO127
HAIRLENGTH	~ 25 cm / 10" ABC: 25 cm / 10"
HAIRCOLOR	5-colored
DENSITY	standard
H/CM²	200 – 230 cm²
HAIRTYP	Indian Human Hair
GRAM OF HAIR	140 g
DIMENSION	~ 53 cm / 20.8 inch
DETAILS	5-PART
€*	61,96



NEW

ELKE
fullpart layered

Nº	SO120
HAIRLENGTH	~ 35 cm / 14" A: 25 cm / 10" B: 30 cm / 12" C: 35 cm / 14"
HAIRCOLOR	dark blond / 7
DENSITY	standard
H/CM²	200 – 230 cm²
HAIRTYP	Indian Human Hair
GRAM OF HAIR	135 g
DIMENSION	~ 53 cm / 20.8 inch
DETAILS	natural fall
€*	62,75



ELKE
fullpart solid

Nº	SO121
HAIRLENGTH	~ 35 cm / 14" A: 35 cm / 14" B: 30 cm / 12" C: 20 cm / 8"
HAIRCOLOR	dark blond / 7
DENSITY	standard
H/CM²	200 – 230 cm²
HAIRTYP	Indian Human Hair
GRAM OF HAIR	135 g
DIMENSION	~ 53 cm / 20.8 inch
DETAILS	natural fall
€*	62,75



FULLPART
uniform dark blond

Nº	SO122
HAIRLENGTH	~ 25 cm / 10" ABC: 25 cm / 10"
HAIRCOLOR	dark blond / 7
DENSITY	standard
H/CM²	200 – 230 cm²
HAIRTYP	Indian Human Hair
GRAM OF HAIR	125 g
DIMENSION	~ 53 cm / 20.8 inch
DETAILS	natural fall
€*	51,98





ELISA
fullpart

Nº	SO131
HAIRLENGTH	~ 40 cm / 16"
	A: 40 cm / 16"
	B: 35 cm / 14"
	C: 35 cm / 14"
HAIRCOLOR	gold blond / 9
DENSITY	increased
H/CM²	230+ cm²
HAIRTYP	Indian Human Hair
GRAM OF HAIR	145 g
DIMENSION	~ 53 cm / 20.8 inch
DETAILS	natural fall
€*	81,74



KEN
fullpart with beard

Nº	SO150
HAIRLENGTH	~ 20 cm / 8"
	ABC: 20 cm / 8"
	D: ~15 cm / 6" beard
HAIRCOLOR	medium brown / 5
DENSITY	increased
H/CM²	230+ cm²
HAIRTYP	Indian Human Hair
GRAM OF HAIR	175 g
DIMENSION	~ 53 cm / 20.8"
DETAILS	natural fall, with beard, extended hairline
€*	61,72



VERTICAL PART
short layered

Nº	SO140
HAIRLENGTH	~ 35 cm / 14"
	B: 20 cm / 8"
	C: 35 cm / 14"
HAIRCOLOR	dark blond / 7
DENSITY	standard
H/CM²	200 - 230 cm²
HAIRTYP	Indian Human Hair
GRAM OF HAIR	60 g
DIMENSION	~ 53 cm / 20.8 inch
DETAILS	natural fall
€*	47,28



VERTICAL PART
short solid

Nº	SO141
HAIRLENGTH	~ 35 cm / 14"
	B: 35 cm / 14"
	C: 15 cm / 6"
HAIRCOLOR	dark blond / 7
DENSITY	standard
H/CM²	200 - 230 cm²
HAIRTYP	Indian Human Hair
GRAM OF HAIR	60 g
DIMENSION	~ 53 cm / 20.8 inch
DETAILS	natural fall
€*	47,28



VERTICAL PART
long uniform

Nº	SO142
HAIRLENGTH	~ 25 cm / 10"
	ABC: 25 cm / 10"
HAIRCOLOR	dark blond / 7
DENSITY	standard
H/CM²	200 - 230 cm²
HAIRTYP	Indian Human Hair
GRAM OF HAIR	60 g
DIMENSION	~ 53 cm / 20.8 inch
DETAILS	natural fall
€*	41,70



EVA
fullpart

Nº	SO130
HAIRLENGTH	~ 40 cm / 16"
	A: 40 cm / 16"
	B: 35 cm / 14"
	C: 35 cm / 14"
HAIRCOLOR	medium brown / 5
DENSITY	increased
H/CM²	230+ cm²
HAIRTYP	Indian Human Hair
GRAM OF HAIR	145 g
DIMENSION	~ 53 cm / 20.8 inch
DETAILS	natural fall
€*	74,50



KEN
fullpart with beard

Nº	SO150
HAIRLENGTH	~ 20 cm / 8"
	ABC: 20 cm / 8"
	D: ~15 cm / 6" beard
HAIRCOLOR	medium brown / 5
DENSITY	increased
H/CM²	230+ cm²
HAIRTYP	Indian Human Hair
GRAM OF HAIR	175 g
DIMENSION	~ 53 cm / 20.8"
DETAILS	natural fall, with beard, extended hairline
€*	61,72



VERTICAL PART
short solid

Nº	SO141
HAIRLENGTH	~ 35 cm / 14"
	B: 35 cm / 14"
	C: 15 cm / 6"
HAIRCOLOR	dark blond / 7
DENSITY	standard
H/CM²	200 - 230 cm²
HAIRTYP	Indian Human Hair
GRAM OF HAIR	60 g
DIMENSION	~ 53 cm / 20.8 inch
DETAILS	natural fall
€*	47,28



PROFILE PART

Nº	SO145
HAIRLENGTH	~ 35 cm / 14"
HAIRCOLOR	dark blond / 7
DENSITY	standard
HAIRTYP	Indian Human Hair
GRAM OF HAIR	70 g
DIMENSION	~ 53 cm / 20.8"
DETAILS	natural fall
€*	49,50





HOLDERS AND ACCESSORIES

Our Tripods and table holders can be adjusted in multiple heights, they are available in different variants with swivel base or as suction holder. Our Tripods are special packed in practical carrying bags for seminar use, they can be folded up to 40 cm.

New are our cosmetic training series with a massage bust and trainingheads with changeable skin areas for eyelash trainings and make up courses.

With our hairswatches you can easily compare colors on 5 different basiccolors.

TRAININGHEADS WITH QUALITY HAIR BY **uwe darm**



TRIPOD black

Nº	2221
WEIGHT	3 kg
COLOR	black
DIMENSION	80 cm folded
MATERIAL	metal/plastic
DETAILS	3-times height adjustable with moving head, comes in a carry bag
€*	99,89



TRIPOD light

Nº	2223
WEIGHT	2 kg
COLOR	grey
DIMENSION	80 cm folded
MATERIAL	aluminium/plastic
DETAILS	2-times height adjustable with moving head, comes in a carry bag
€*	85,95



TRIPOD Premium

Nº	2225
WEIGHT	1,5 kg
COLOR	black/rose
DIMENSION	60 cm folded
MATERIAL	metal/plastic
DETAILS	4-times height adjustable with swivel basehead, comes in a carry bag
€*	159,31



TRIPOD Flex

Nº	2226
WEIGHT	1 kg
COLOR	black/rose
DIMENSION	40 cm folded
MATERIAL	metal/plastic
DETAILS	5-times height adjustable with swivel basehead, comes in a carry bag
€*	119,26



*prices net plus taxes & shipping costs



TABLEHOLDER
white

Nº	2230
COLOR	white
MATERIAL	plastic
DETAILS	tableholder with moving head and extensions bar
€*	16,48



TABLEHOLDER
black

Nº	2231
COLOR	black
MATERIAL	plastic
DETAILS	tableholder with moving head
€*	5,47



TABLEHOLDER
metal

Nº	2232
COLOR	silver/black
MATERIAL	metal/plastic
DETAILS	height-adjustable tableholder with moving head
€*	49,92



TABLEHOLDER
Suction holder

Nº	2233
COLOR	black
MATERIAL	plastic
DETAILS	tableholder with moving head and suction
€*	17,05



© YURI MASIAK - stock.adobe.com



CHANGEABLE EYELID with lashes

Nº | 2357
COLOR | skin colored
MATERIAL | Softfoam
DETAILS | 3 pairs eyelid
€* | 21,49



MASSAGE-BUST large

Nº | 2351
COLOR | skin colored
DIMENSION | ~37 cm width, 40 cm height
MATERIAL | Softfoam
DETAILS | can be mounted on tripods
€* | 55,56



EYELASHES COSMETIC HEAD with removeable eyelid

Nº | 2356
COLOR | skin colored
MATERIAL | Softfoam
DETAILS | Cosmetic Head with 1 pair lashes, fits all tripods
€* | 29,92



COSMETICS TRAINING HEAD

Nº | 2360
COLOR | skin colored
DIMENSION | ~ 23 cm height / 15 cm width
MATERIAL | Softfoam
DETAILS | Eyes and mouth area are changeable
€* | 19,11



REPLACE PARTS

Nº | 2361
COLOR | skin colored
MATERIAL | Softfoam
DETAILS | Changeable eye and mouth area for cosmetic training head, 3 pairs per pack
€* | 9,26



HAIR SWATCHES white

Nº | 2300
HAIRCOLOR | white
DIMENSION | 7 cm / 3"
MATERIAL | Goat Hair
DETAILS | 10 pieces
€* | 7,98



HAIR SWATCHES brown

Nº | 2301
HAIRCOLOR | brown
DIMENSION | 7 cm / 3"
MATERIAL | Indian Human Hair
DETAILS | 10 pieces
€* | 7,98



HAIR SWATCHES light brown

Nº | 2302
HAIRCOLOR | light brown
DIMENSION | 7 cm / 3"
MATERIAL | Indian Human Hair
DETAILS | 10 pieces
€* | 7,98



HAIR SWATCHES gold blond

Nº | 2303
HAIRCOLOR | gold blond
DIMENSION | 7 cm / 3"
MATERIAL | Indian Human Hair
DETAILS | 10 pieces
€* | 7,98



HAIR SWATCHES light blond

Nº | 2304
HAIRCOLOR | light blond
DIMENSION | 7 cm / 3"
MATERIAL | Indian Human Hair
DETAILS | 10 pieces
€* | 7,98

SOME OF OUR WORLDWIDE CLIENTS



Uwe Damm
 Trainingheads GmbH
 Am Ökopark 9
 8230 Hartberg
 office@uwe-damm.com
 www.uwe-damm.com



@uwedamm.trainingheads



@uwedamm_trainingheads
 #uwedamm_trainingheads